

Product Specifications

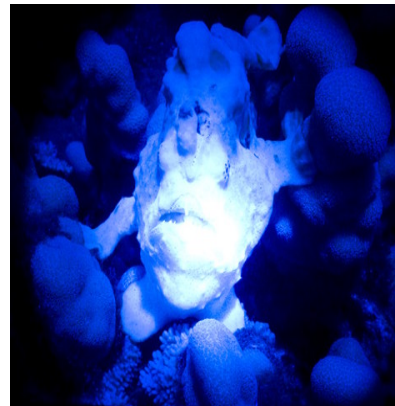
Item: 365nm UV LED Inspection Flashlight

Model No.: 4W356UV

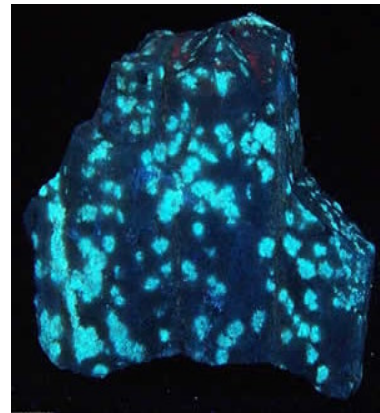


Features:

- ◆ Equipped with the latest high power UV LED at 365nm peak wavelength.
- ◆ Output UV light intensity $>4000\mu\text{W}/\text{cm}^2$ at 38cm irradiation distance.
- ◆ Use life >20000 hours, much longer than the UVA lamp.

**Shutterbugs**

- ◆ Special rechargeable Li-ion battery power supply provides typically 180 minutes continuous inspection.

**Mineral Detective**

- ◆ Instant-on/off, no need to warm up
- ◆ Environmental friendly, best replacement for 150W, 200W UVA mercury Lamp
- ◆ Single wavelength, deep UV light generation.
- ◆ Durable aluminum casing, corrosion and shock resistant.

Largely used as UV detective light in different areas, including:

- Mineral detective
- Metal crack check.
- Nondestructive testing.

**Nondestructive testing**

- Antique identification
- Diamond identification
- Security markings inspection.
- Criminal scene proof collection.
- Automobile air condition fluid leaking (freon) detection



Diamond Identification



Credit Card Identification



Automobile A/C leak inspection



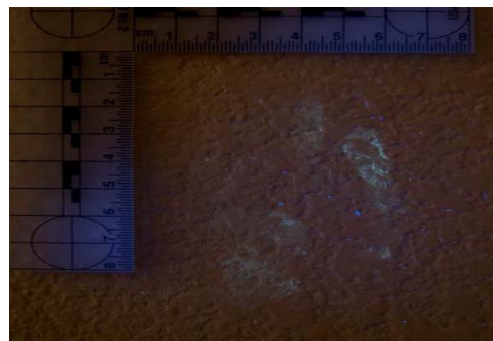
**Tiny specks of tar balls
Under warm, white light
are almost impossible to
distinguish ...**



**... the same sample area
under the UV light.**

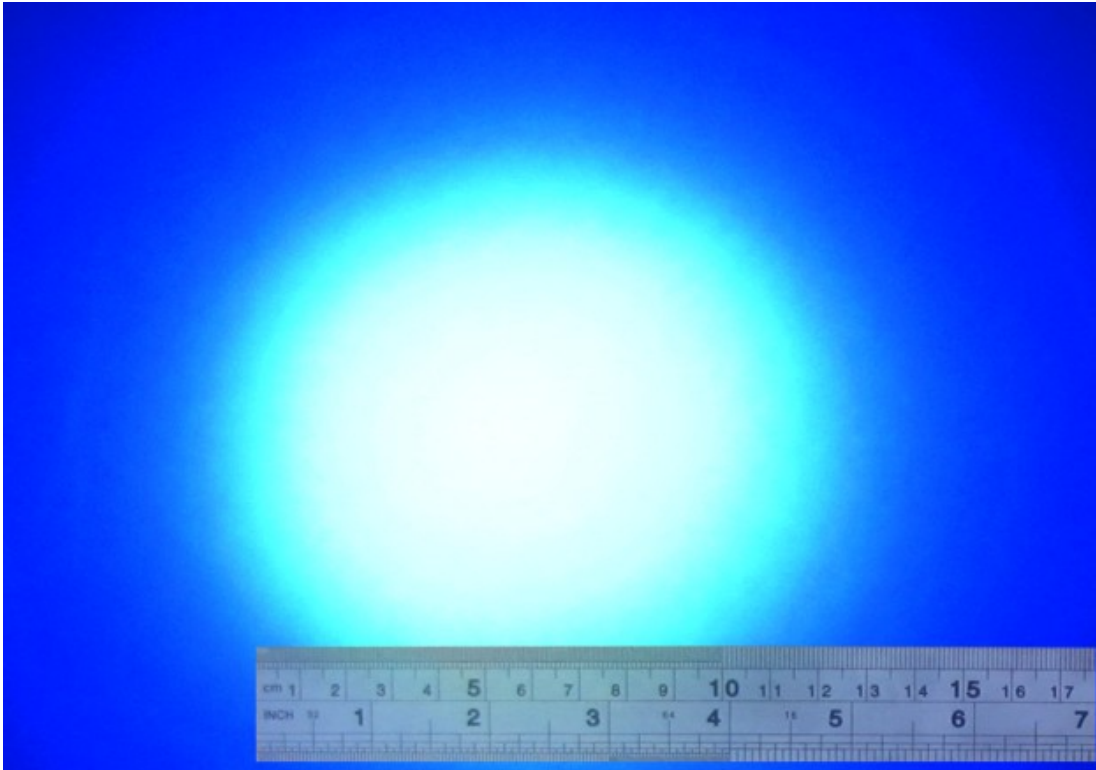


Handprint on wall under normal light



Handprint on wall under UV light

UV light indication:



UV



Part No.	4W365UV
Lamp Style	cordless UV LED flashlight
Wavelength	365±5nm
Visible Light(380-780nm)	< 1 Lux ₁ <0.09 Foot Candle ₁
Length	135mm
Lamp Head Diameter	32mm
Lamp Handle Diameter	20mm
Weight(no battery)	111g
Power supply	1. one cell 3.7V 2600mah rechargeable Li-ion battery
Run Time	1. typically 240 minutes with battery
Charge Time	4-6 hours
Accessories	1pcs rechargeable batteries, 1pcs adapter
Package	Plastic case Package size: 23*18*5cm
UV Power Output	4000μW/cm ² at 38cm
Material	6063# Aluminium alloy
Battery	18650 3.7V Li-Ion Rechargeable battery
Battery Charger	Input: 100-240V , Output: 4.2V /1000mA